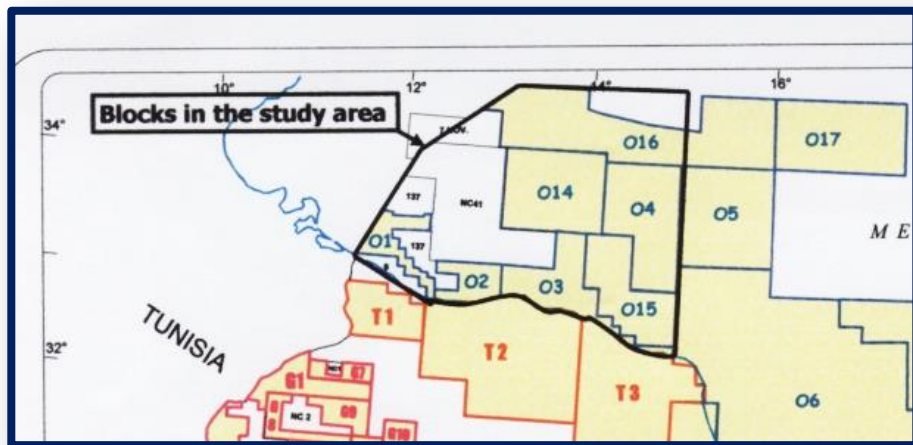


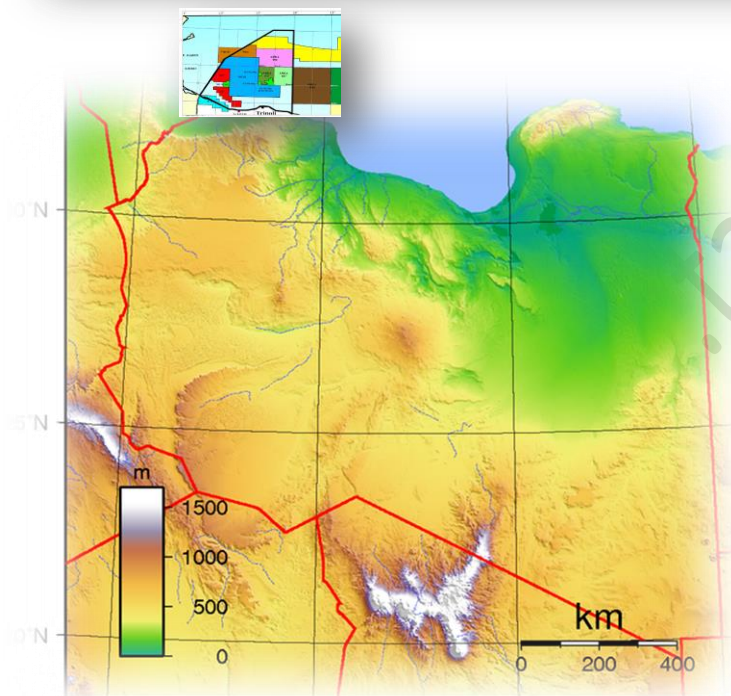
# Target Exploration

Energy Geosciences Research & Development



# Petroleum Geology and Basin Analysis of Offshore Libya

*Target Exploration Report Tar11*



## The Report

This is a detailed basin modelling of the stratigraphy, source rocks, source rock maturation, seismic structures, and basement and salt tectonics as well as petrographic analysis of the proven and potential reservoir facies of the most prolific [Offshore Area of NW Libya](#). The study is based on core samples, and a database of 47 key E&P wells and [several SEISMIC survey vintages as well as gravity and magnetic surveys](#).

[The report is in 100 pages of text with:](#)

- ❑ 116 Figures, sections and maps
- ❑ 47 Petrographic and SEM plates
- ❑ 17 Tables
- ❑ Seismic base map and 8 seismic sections
- ❑ 4 Seismic structural contours maps
- ❑ Reference list
- ❑ Appendices: Formation tops of 47 E&P wells.

[Click for Table of Contents](#)

---

This report is immediately available from Target Exploration

[Click here to order your copy](#)

**For further information, contact: M. Casey, Target Exploration Consultants, 65 Kenton Court, London W14 8NW, UK. Tel: (+44) (0) 207 371 2240**

Email: [target@targetexploration.com](mailto:target@targetexploration.com)

[www.targetexploration.com](http://www.targetexploration.com)

[Home](#)

[About Us](#)

[Experience](#)

[Services](#)

[Training](#)

[Conferences](#)

[Publications](#)

[Order Form](#)

[News](#)

[Careers](#)

[Contracts](#)

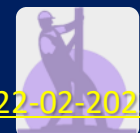
[Downloads](#)

[Uploads](#)

[Links](#)

[Rep/Software](#)

[Contact Us](#)



22-02-2022