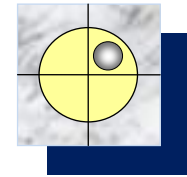


Target Exploration

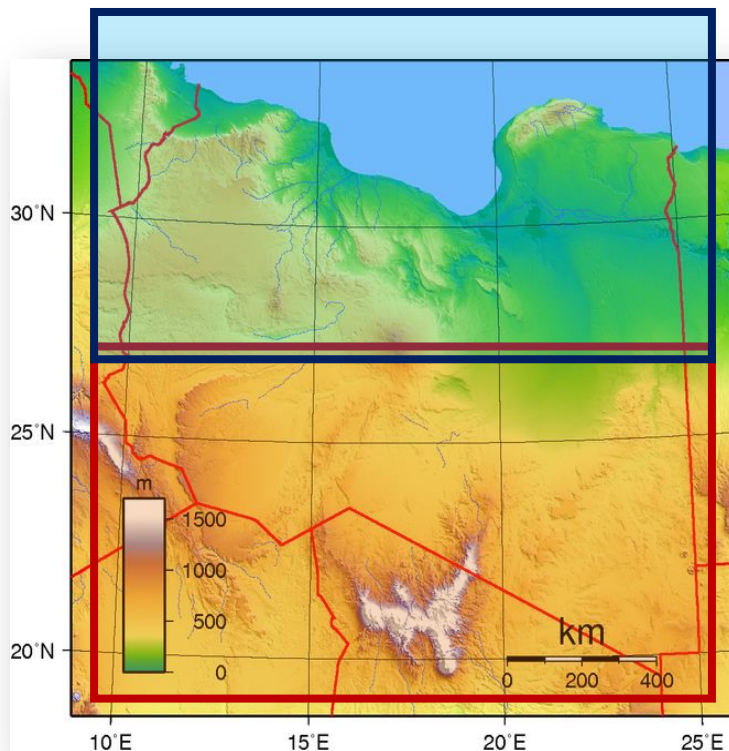
βapp



Target Exploration

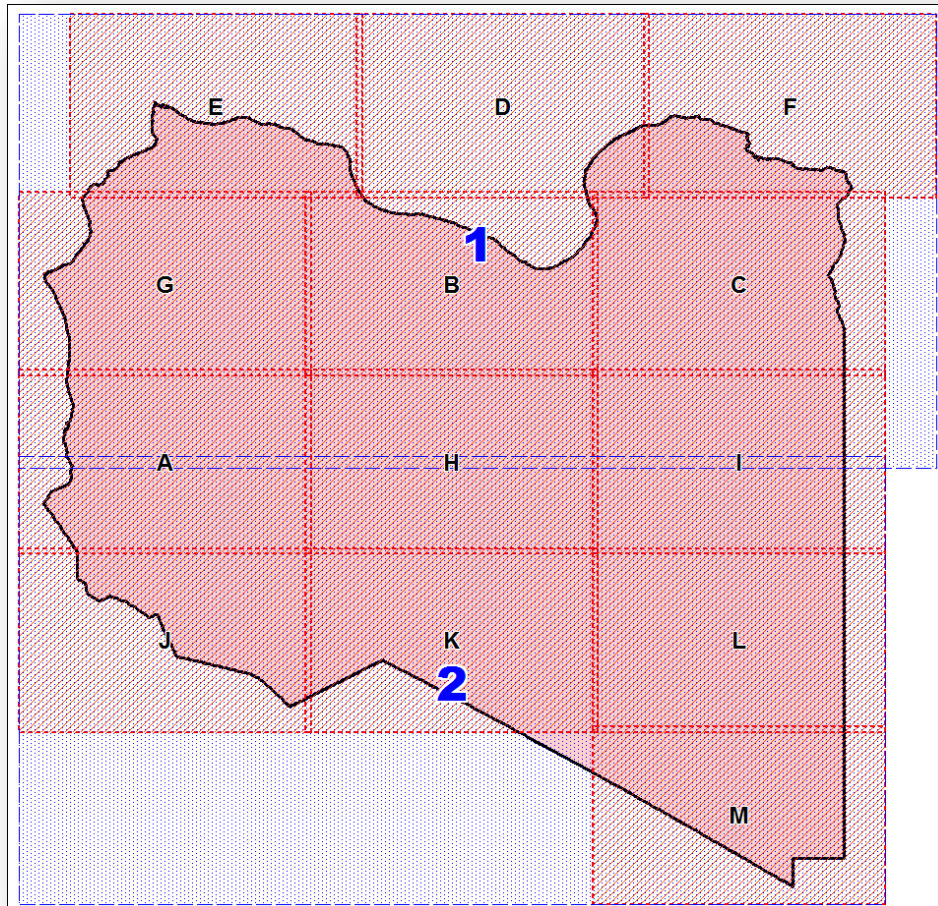
ARC-GIS Gravity Anomalies of Offshore & Onshore Libya

This report is in fifteen map-sheets sets (13 local and 2 regional, as in the map below). Each set is composed of five ARC-GIS Gravity and other related GIS maps of offshore and onshore Libya. In addition to new deep GIS Gravity anomalies, the maps extends the known prospective areas into new areas for exploration.



Each Large Scale (1/250,000) and Regional Scale (1/1000,000) Map Sheet Set is composed of:

1. **GIS Topographic and Bathymetric Maps:** Our research revealed that most of the oil and gas fields of MENA have a topographic expression ([Topo-Anomalies](#)).



2. **GIS Bouguer Gravity Anomalies Map.**

3. **GIS Total Sediments Thickness Map:** Regional map, showing hitherto unknown basinal configurations of the elevated Basins of Libya.

4. **GIS Basement Structure Map:** Regional map of one of the most important hydrocarbon generation, migration and trap-locating element of Libya. The map redefines the extents of some of the currently known basins, sub-basins and basement highs, as well as other regional tectonic elements of Libya.

5. **GIS Residual Gravity Anomalies Map:** this regional map delineates numerous inter and intra-basinal residual gravity highs that may constitute the next generation of exploration targets.

6. **Correlation Graphs of Well-controlled VS. GIS Gravity Depths of Basement per each Map Sheet and Basin of Libya.**
7. **Short Description of Methodology and list of the Generated Gravity Anomalies.**

The Map Sheet Sets can be purchase in three different packages:

Package A: Two Regional Map Sheet Sets, scale 1/1000,000 (Map Sheet Sets 1 and 2).

Package B: Thirteen Map Sheet Sets, scale 1/250,000 (Map Sheet Sets A, B, C, D, E, F, G, H, I, J, K, L and M).

Package C: A Set of one Basin-Wide Map Sheet covering your Area of Interest (of any of the individual map sheet sets of A, B, C, D, E, F, G, H, I, J, K, L and M).

This report is a serious contribution to the Libyan upstream oil and gas industry and the new cycle of Libyan discoveries. The report can be delivered in PDF and several other electronic formats. **It is available from Target Exploration.**

[Click here to purchase your copy](#)

For further information, contact:

M. Casey

Target Exploration Consultants

65 Kenton Court, London W14 8NW, UK.

m.casey@targetexploration.com

www.targetexploration.com



Revised 12/01/2019