

Target Exploration

Energy Geosciences Research & Development



Profile of Target Exploration Consultants

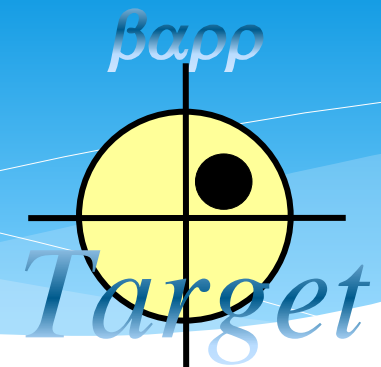
Telephone: (+44) (0) 207 371 2240

Target@TargetExploration.com

www.TargetExploration.com

Kuwait Oil Company Overseas Supplier
Oman's Ministry of Oil & Gas JSRS-Certified Overseas Supplier

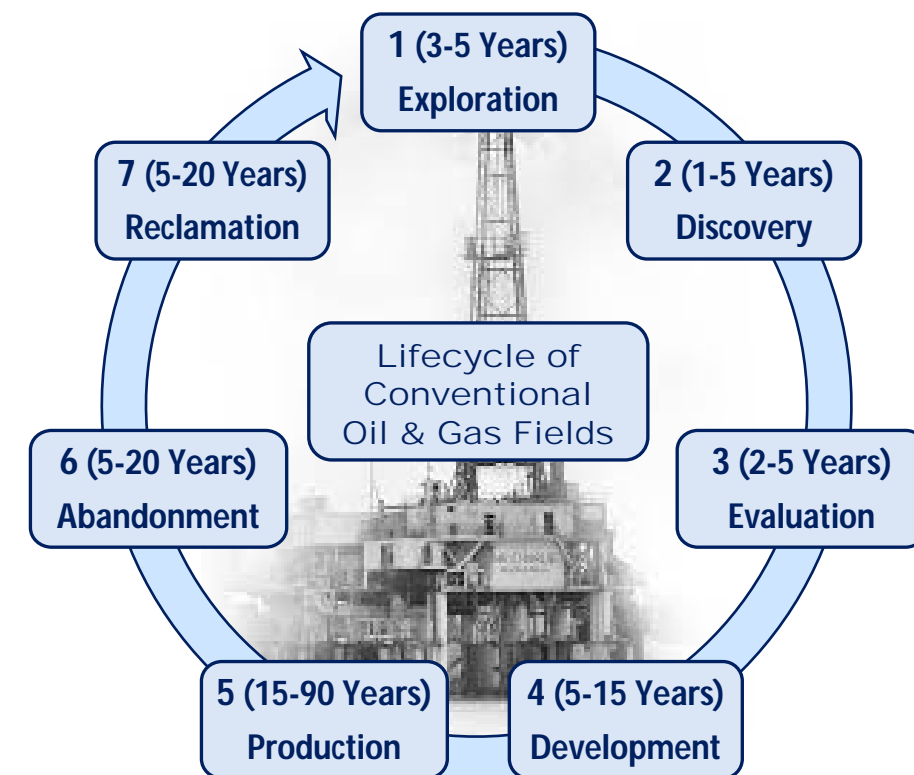
Target Exploration



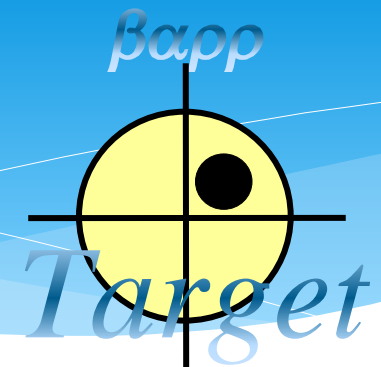
Background

Target Exploration Consultants was established as Petroleum Exploration & Production Geosciences and GeoEnergy R&D Consultancy in Kensington, London, UK in 1990 by [Muhammad W. Ibrahim, PhD](#), a Petroleum Geologist, in association with a group of Multidisciplinary Consultant Geoscientists with extensive experience in **Petroleum Exploration, Evaluation, Development and Production, Geoscience besides R&D of Geothermal and Solar Energy in sand and dust storm SDS Environments.**

After more than 30 years Target Exploration multidisciplinary consultants have been providing Petroleum and Geo-Energy consulting services and R&D solutions to the upstream petroleum and GeoEnergy industries.



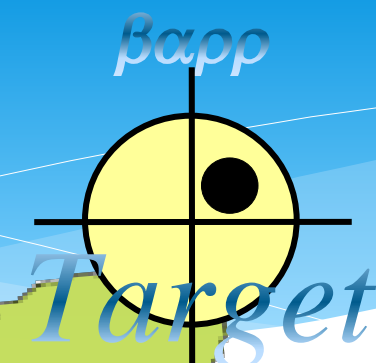
Target Exploration



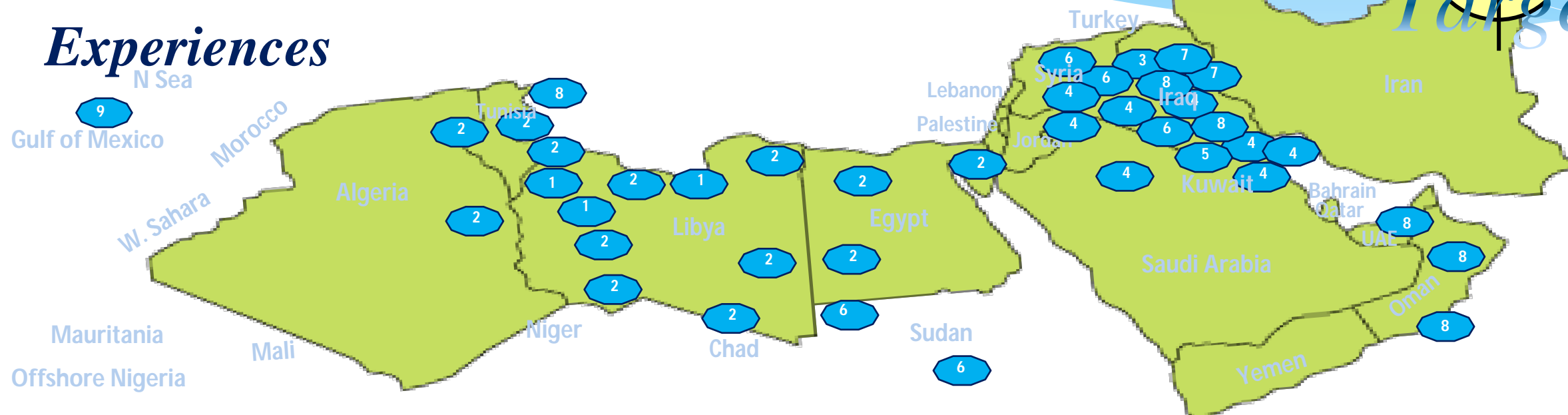
Principles

- ✓ **Mission:** *Target Exploration Consultants* has for more than 25 years been a provider of quality orthodox and innovative geological, geophysical, structural, stratigraphic, sedimentological, geochemical, geothermal, geo-software and other geosciences R&D solutions for petroleum exploration, development and production challenges.
- ✓ **Vision:** *Target Exploration Consultants' teams* are providers of orthodox and innovative R&D solutions for petroleum exploration, development and production challenges in frontier, immature, and mature basins. Target ECL teams are constantly striving to provide quality studies of conventional, unconventional petroleum reservoirs in fields, areas, and basins, and of geothermal, hybrid, hydro, hydrogen, solar, wave, wind, and other renewable MENA energy crossovers.
- ✓ **Expertise:** *Target Exploration's* research generated exploration prospects, exclusive and non-exclusive petroleum prospectivity reports, as well as in-house software for systematic dry-hole post-mortems, geothermal gradients mapping and interpretation, concessions ranking, and identifying possible, probable and potentially bypassed petroleum traps by "[Un-discovery Wells](#)" currently classified as dry holes.
- ✓ **Goals:** In addition to more than 100 publications and presentations at international journals and conferences, *Target ECL has been transferring knowledge and technologies* to upstream petroleum and energy geoscientists through our regular conferences, such as: the Middle East and North Africa Oil and Gas Conferences ([MENA](#)), the Iraqi Petroleum Conferences ([IPC](#)) and Target's Geological Fieldtrips and Courses ([Courses](#)).
- ✓ **Values:** Driven by health and safety at our work environments, *Target Exploration consultants* seized the initiative of researching, predicting and projecting the environmental changes that they have been witnessing in MENA countries. Target ECL has an on-going research into the impact of Sand and Dust Storms (SDS), hydrocarbon seepages and other Geo-hazards in the Arabian Gulf Countries. Our [MENA 2017, 2019 and 2022 O&G Conferences](#) included feasibility, status and progress of geothermal, hydro, solar and other renewable energy projects in MENA.
- ✓ **Quality:** Target Exploration's slogan is: ***Our Last Product is Our Best Product***

Target Exploration



Experiences



Locations of completed reservoirs, fields, concessions, areas and/or basin studies by Target Exploration Consultants

1. Due diligence evaluation of 23 fields with 96 pay zones of new-ventures in Ghadames and Murzuq basins, and one concession in Sirte Basin for **LASMO Grand Maghreb**.
2. Regional evaluation of prospectivity of Paleozoic basins of E. Algeria, Tunisia, Libya, Chad, Niger and Egypt in Paleozoic prospectivity study of N. Africa for **LASMO International**.
3. Geology and Petroleum prospectivity of ENE Syria-WNW Iraq for **Unocal Syria**.
4. **A.** Geology and petroleum prospectivity of the Paleozoics of W. Iraq. **B.** Evaluation of PSA eleven giant fields of S. Iraq. **C.** Petroleum Geology of Kuwait project, and **D.** Geothermal gradients of Iraq and adjacent areas for **Amoco Overseas**.
5. Due diligence evaluation of one giant oil and gas field in S. Iraq for **Petronas Carigali, KL**.
6. Evaluation of one concessions in Iraq, two in Syria and two in Sudan for **DNO, UK**.
7. Exploration and drilling of 3 concessions in NE Iraq for **Korea National Oil Corporation-ME**.
8. **A.** Review of heavy oil fields potential of Iraq. **B.** Evaluating undeveloped discoveries and one offshore discovery in Oman. **C.** Evaluating two Arabian Sea concessions in UAE, and one in offshore Tunisia for **Raven Energy**.
9. Geothermal Gradients and Geothermal Gradient's Anomalies of HC Entrapment, UKCS Quadrants 35-54: **Mobil Oil UK**.

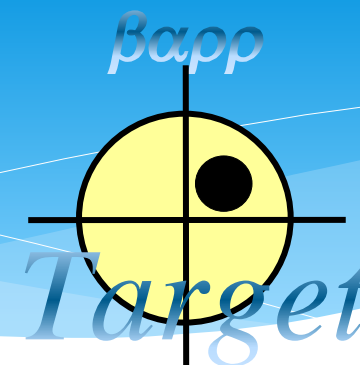
Target Exploration



Dexterities



Target Exploration

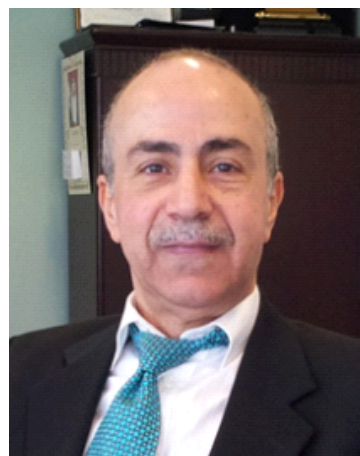


Consultants I



AbdelHamid Benhabireche, MSc

A. Fields Development Geosciences



Ahmad Al-Shaikh, MSc

B. Fields Development Seismic



Ahmad Fahim, BSc

C. Seismic QA & QC



Ali Al-Jubouri, PhD

D. Sedimentary Petrography



Basim Al-Kubaisi, PhD

E. Source Rocks Geochemistry



Falah Al-Jubori, PhD

F. Stratigraphic Palynology



Foad Abomreqa, BSc

G. Wellsite Operations



Giuma Reeh, PhD

H. Gravity-Mag & Seismic Exploration

Target Exploration



Consultants II



Sihreen H. Ali, MSc

S. Operation Geologis



Hassan S. Hassan, PhD

J. Carbonate Exploration Geologist



Esmaeel Ibraheem, MSc

K. Petroleum Reservoir Engineer



Irfana Tallat, MSc

L. ArcGIS & Computer Modelling



Mohammed Warrak, PhD

M. Mapping & Structural Modelling



Nahidh Marouf, PhD

N. Petrophysics & Basin Modelling



Patrick Clews, MSc

O. Reservoir Characterisation

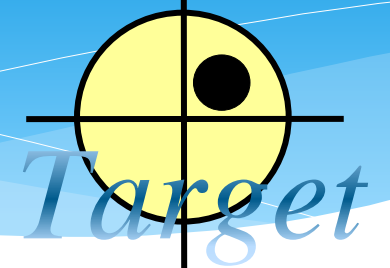


Samir Abassi, MSc

P. Drilling & Completion Engineering

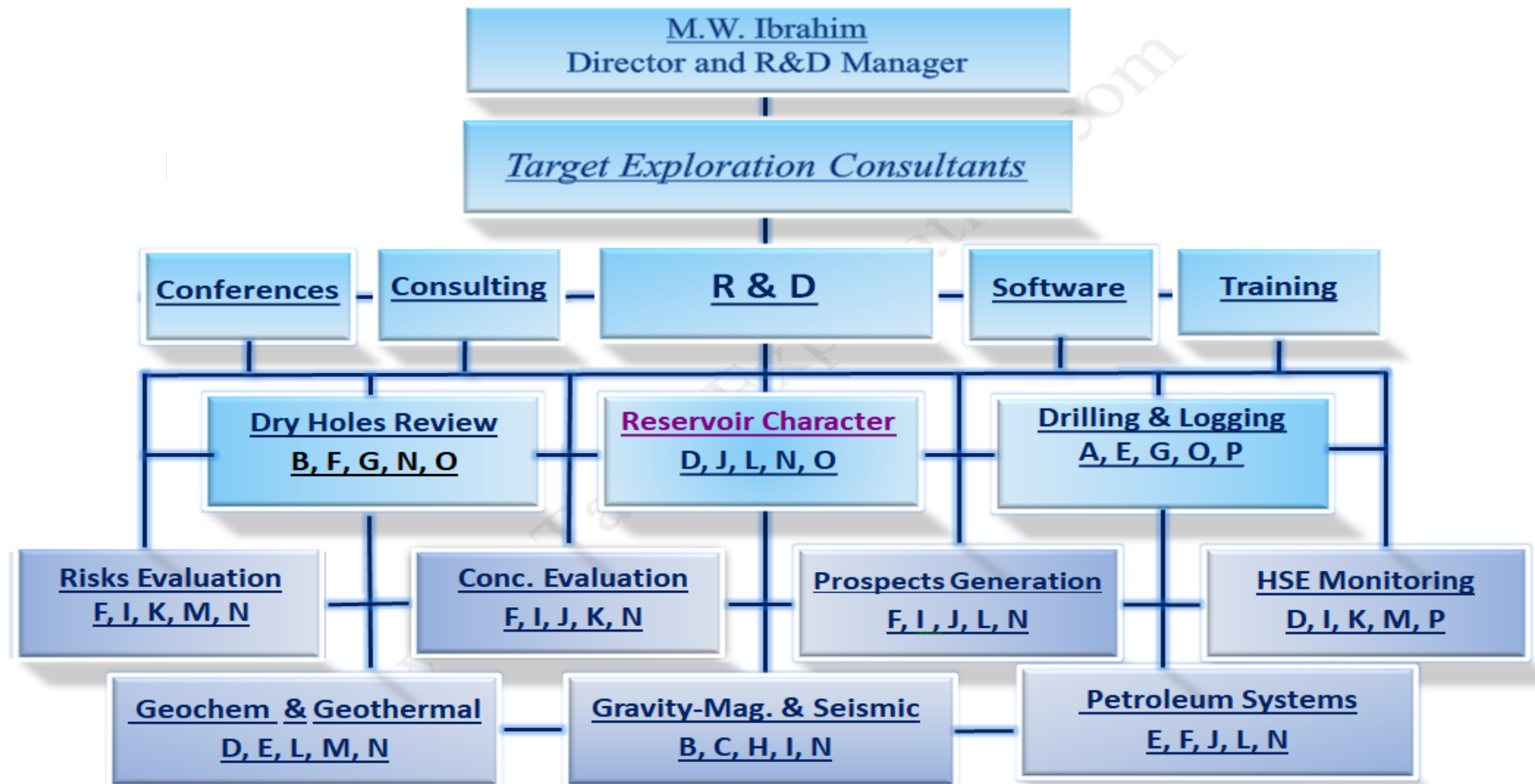
Target Exploration

βapp



Organisation

Integrated Multidisciplinary Geosciences Consulting Services and R&D Solutions



Target Exploration



Accomplishments

- ✓ Performed many oil and gas-field's reservoirs characterisation, modelling, and HC reserves estimations.
- ✓ Developed multidisciplinary prospects generation through integration of volume, geochemical, geothermal evolution of source rocks; thickness, quality and structural evolution of reservoir and cap rocks.
- ✓ Conducted petroleum systems analysis of several basins in the Middle East, North Africa and other regions.
- ✓ Developed exclusive Geosciences Software such as: (A) (CGG-ESTI) for database generation, plotting, analysis, mapping and interpreting geothermal gradients, (B) (GCA-DM) for drilling mud gas analysis and interpretation, (C) (STGRTH) for retracing structural, stratigraphic and combination traps evolution; and (D) (E&P-RANK) for statistical ranking of large number of concessions across several basins and tectonic regimes.
- ✓ Developed systematic post-mortem analysis of dry-holes and re-interpretation of final-well reports.
- ✓ Delivered more than 100 exclusive and non-exclusive reports and conference documents, and published over 100 peers reviewed papers, abstracts and conference presentations.
- ✓ Organised more than fifteen Oil and Gas Conferences, and many Petroleum Geology courses and fieldtrips.
- ✓ Maintaining a large references library of HCs and energy geosciences books, published and unpublished energy exploration reports, papers; conference proceedings, and course, fieldtrip and workshop documents.
- ✓ Preserving a large archive of petrographic sections, cores, cuttings and rock samples, as well as base maps, topographic, geological and seismic maps and sections.

Target Exploration

Energy Geosciences Research & Development



Contacts

Target Exploration

Energy Geosciences Research & Development



Target Exploration Consultants

65 Kenton Court, London W14 8NW, UK.

Telephone: (+44) (0) 207 371 2240

Email: Target@TargetExploration.com

Target Exploration

Energy Geosciences Research & Development



Muhammad W. Ibrahim, PhD

Target Exploration Consultants

65 Kenton Court, London W14 8NW, UK

Mobile: (+965) 976 350 26

Email: mw.ibrahim@TargetExploration.com

[Home](#)

[About Us](#)

[Experience](#)

[Services](#)

[Training](#)

[Conferences](#)

[Publications](#)

[Order Form](#)

[News](#)

[Careers](#)

[Contracts](#)

[Downloads](#)

[Uploads](#)

[Links](#)

[Rep/Software](#)

[Contact Us](#)

